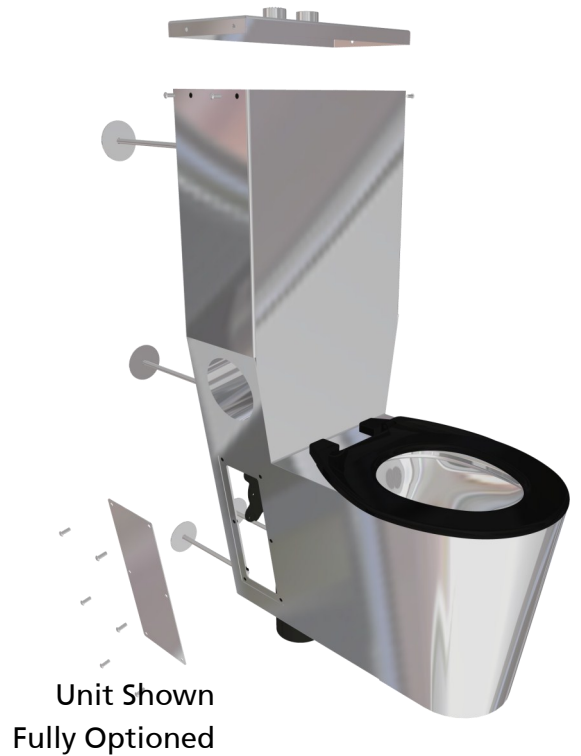


WALL FACE CLOSE COUPLING PAN

WCWFCC453



FEATURES

- In Built Dual Flush Cistern
- Anti-Contraband Flushing Rim
- Standard 'P' Trap Waste, available with Adjustable 'S' Trap Connection
- Watermark Approved
- 4 Star WELS Rating

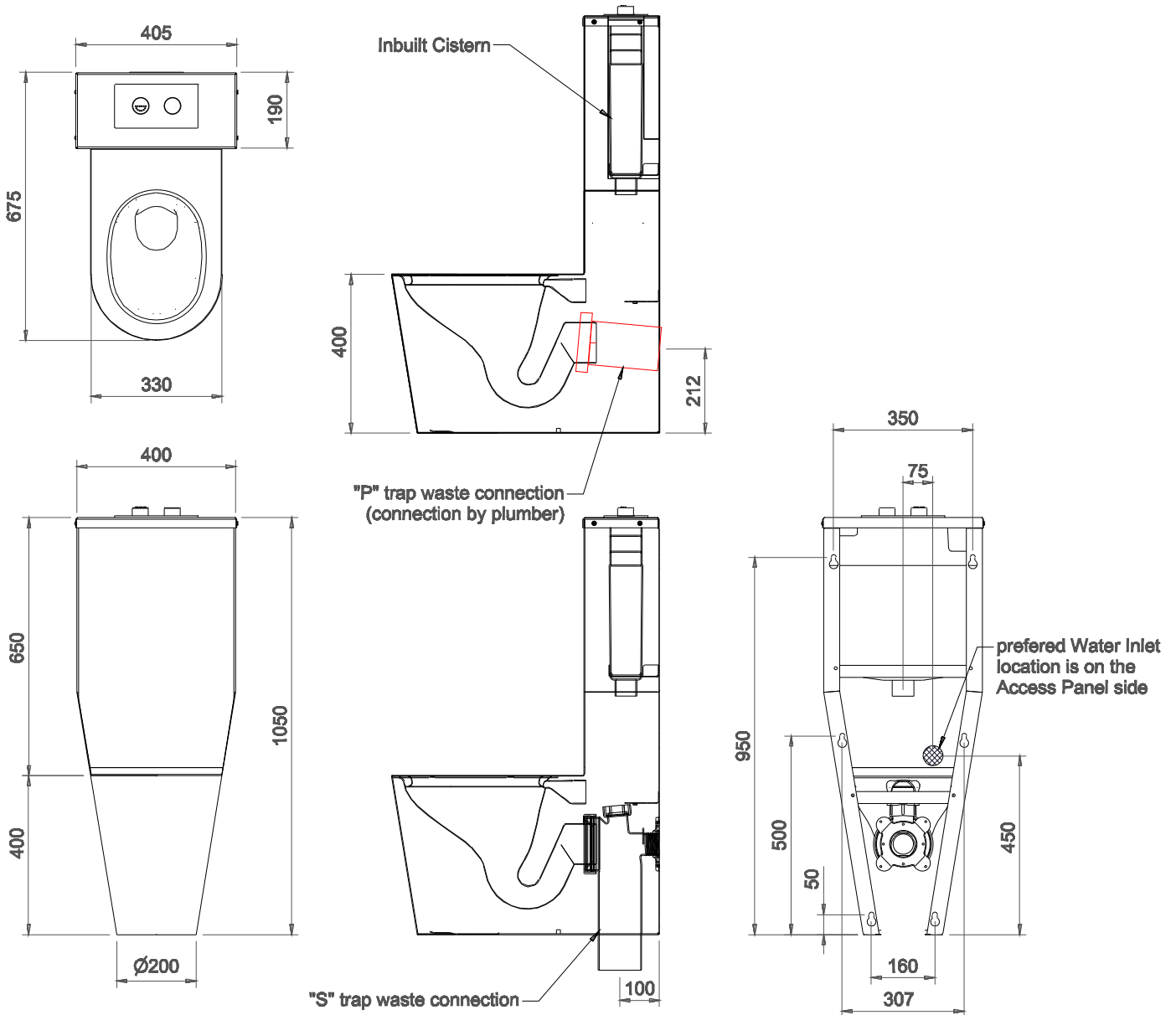
OPTIONS

- Heavy Duty Construction—3 & 2mm thick Material for Security—Vandal Resistant
- Detention flush devices can be pre-fitted for ease of installation
- Access Panel to suit Services & Fixings
- Inbuilt Toilet Roll Holder
- Toilet Seats



WC PANS

WALL FACE CLOSE COUPLING PAN
 WCWFCC453



SPECIFICATIONS

Stainless Steel Wall Face Close Coupling Pan Shall be Model WCWFCC453
 Opie Manufacturing Group
 Phone 02 4735 5666