

WASH TROUGHS

VANITY WASH TROUGH

VT1

Unit Shown
Fully Optional

FEATURES

- Integrated Sloping Wash Plane for Hygiene & cleanliness
- 200mm High Splashback
- Front Skirt Conceals Trough & Improves Appearance
- Rear Continuous Drain with Inbuilt Fall and Grate Cover
- Benchtop comes with timber backing that is fibreglass resin sealed
- Wall Mounting Brackets Supplied
- 38mm Plug & Waste Supplied

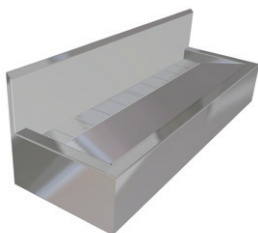
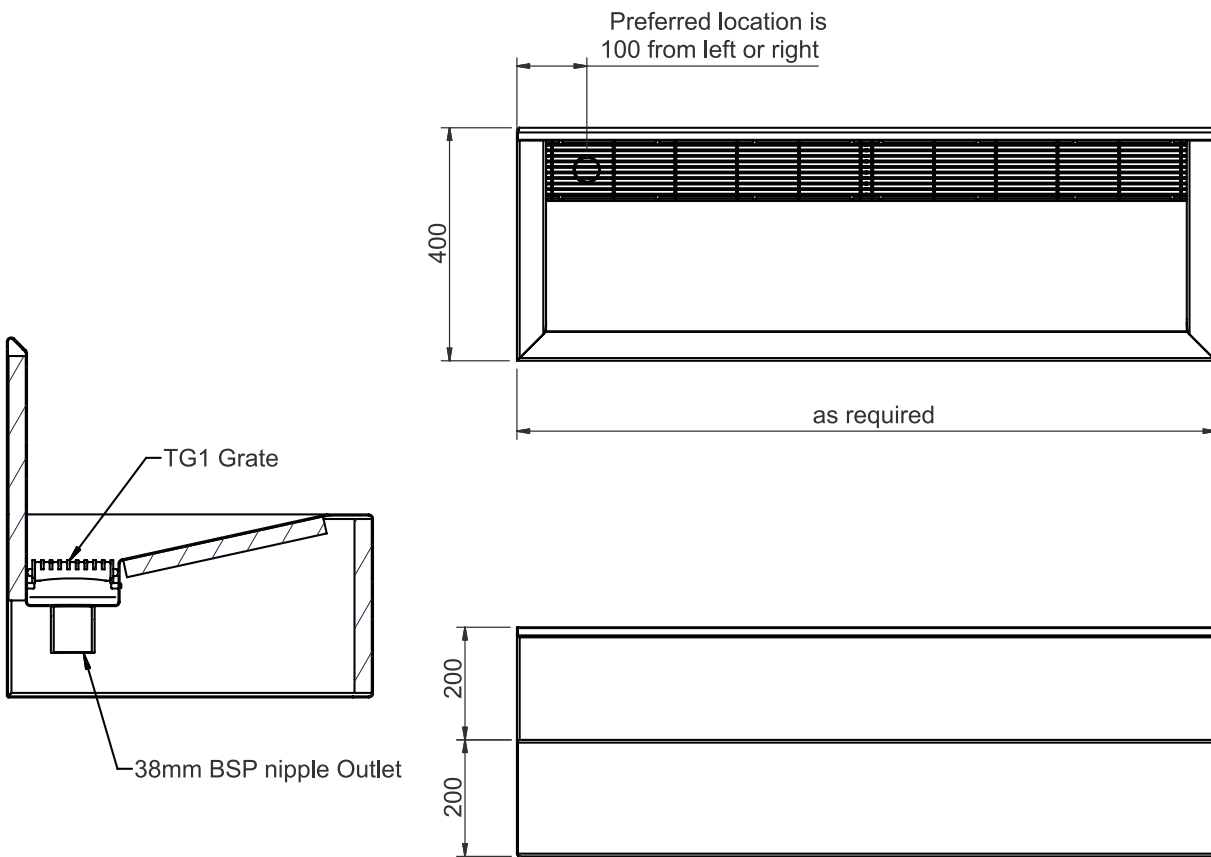
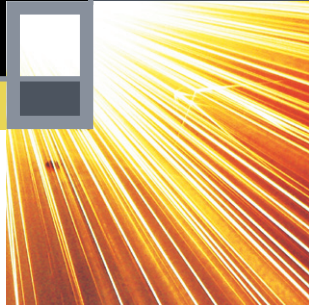
OPTIONS

- Custom made – Length, Tapware & Drainage will vary depending on your application & Client. Please consult our Office
- Design Profile is variable to suit your Special Application
- Available with Splashback End to full Width & Height to protect Wall
- Available with fully sealed & enclosed ends, if no end Wall
- Mounting Frame with Removable Access Panels to conceal plumbing
- Tapware, which can be Pre-fitted for ease of installation

WASH TROUGHS

VANITY WASH TROUGH

VT1



SPECIFICATIONS

Stainless Steel Vanity Wash Trough shall be Model VT1 from Stainless Metal Craft.
Phone 02 4735 5666