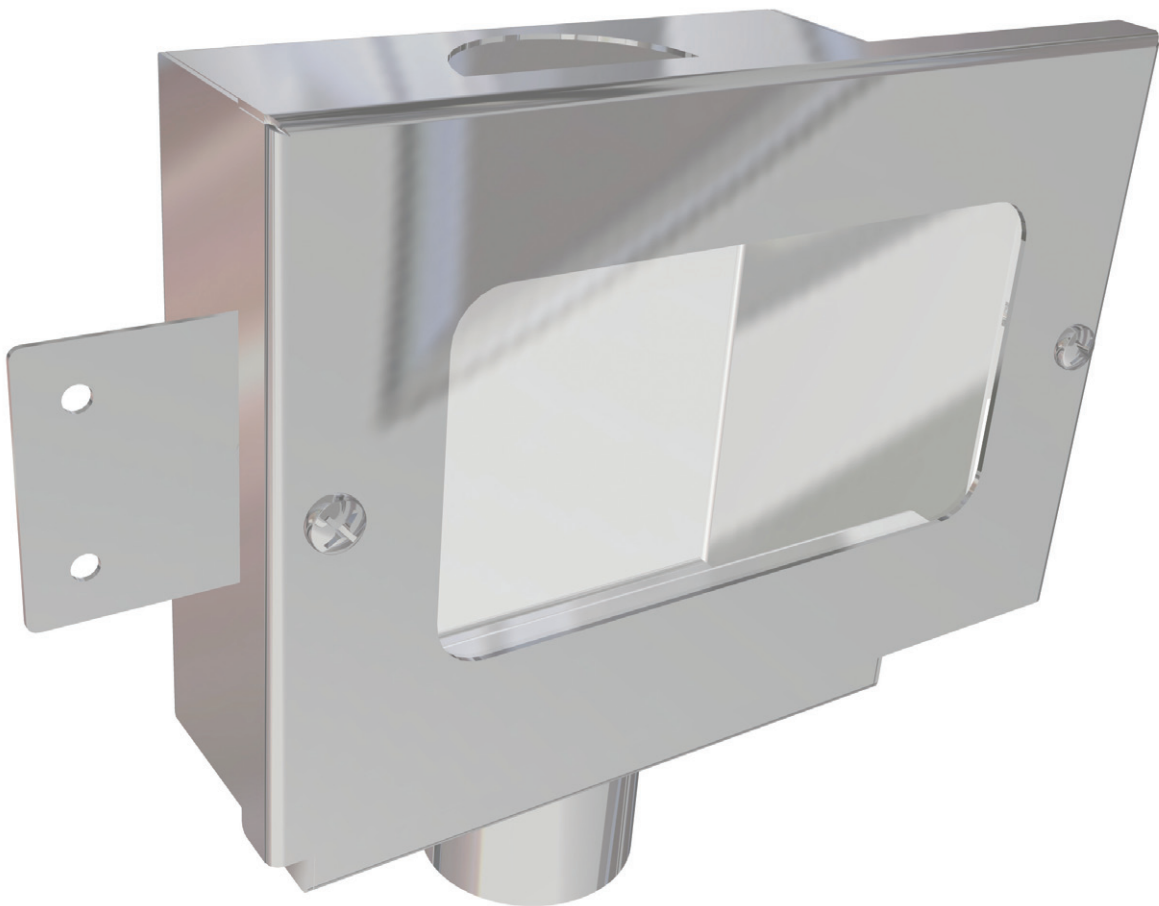


## RECESSED IN WALL TUNDISH

TURE3

**FEATURES**

- Removable Face Plate with Clear Perspex Viewing Window
- Will fit inside 90mm Wall Cavity

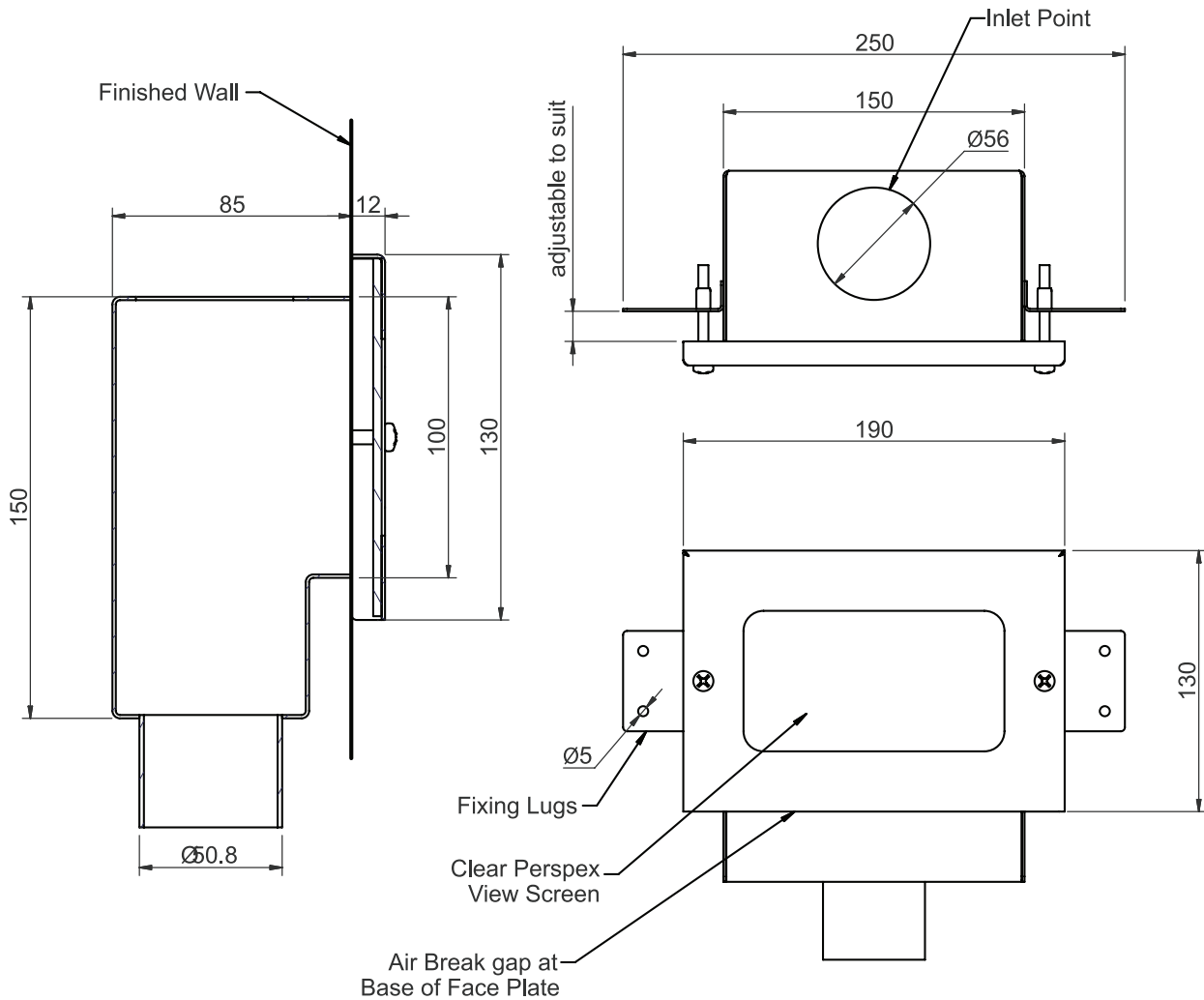
**OPTIONS**

- Marine Grade 316
- Other Face Plates Available (e.g. Solid or Letterbox Style)
- Security Fixings
- Design Profile is variable to suit your Special Application

TUNDISHES

RECESSED IN WALL TUNDISH

TURE3



SPECIFICATIONS

Stainless Steel Recessed Tundish Model TURE3 from  
Stainless Metal Craft.  
Phone 02 4735 5666