

RECESSED IN WALL TUNDISH

TURE1A

**FEATURES**

- Removable Face Plate with Clear Perspex Viewing Window
- Will fit inside 90mm Wall Cavity
- Multiple Discharge Inlet Points for Condensation Lines
- Supplied with Rubber Blanking Grommets

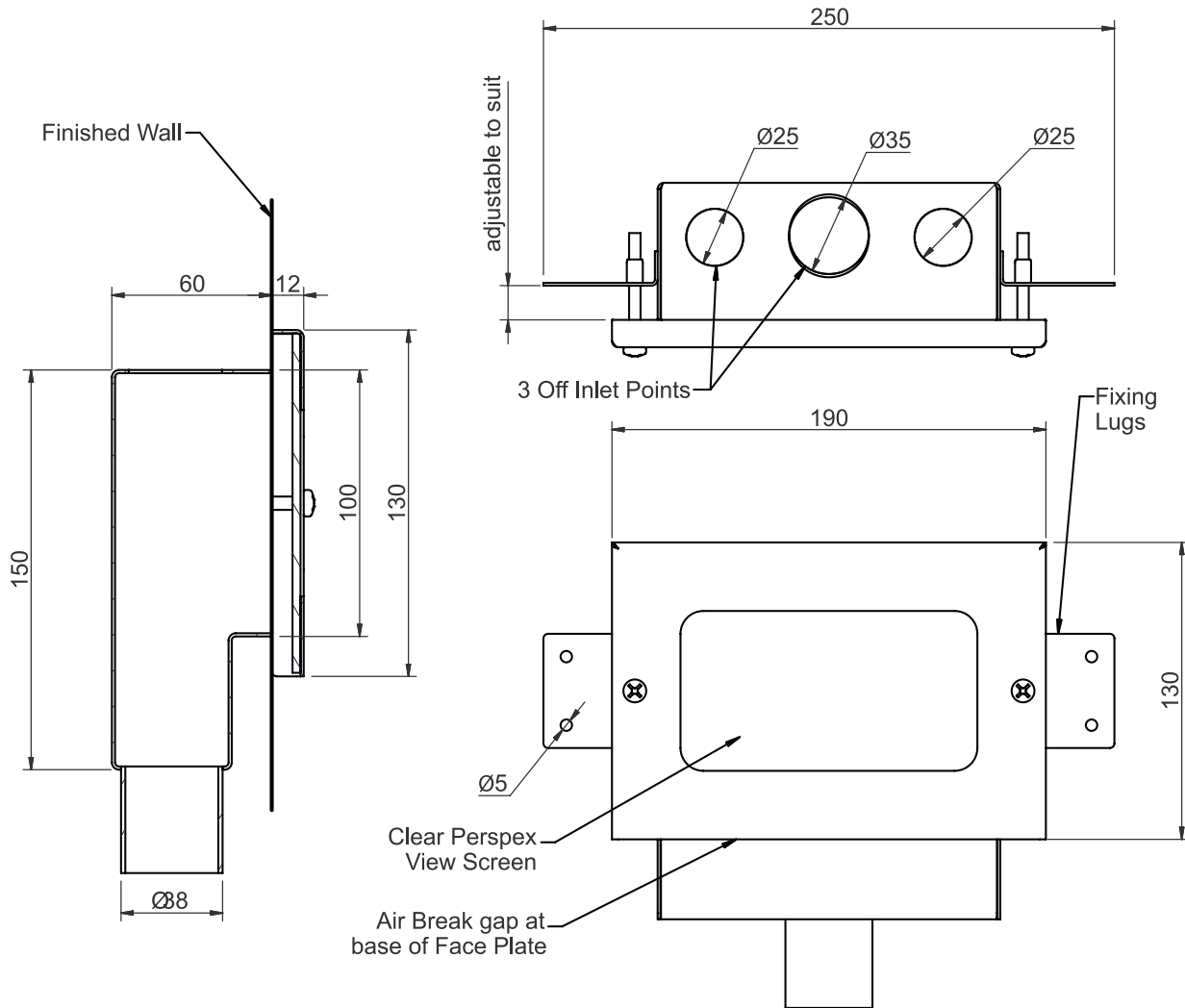
OPTIONS

- Other Face Plates Available (e.g. Solid or Letterbox Style)
- Design Profile is variable to suit your Special Application

TUNDISHES

RECESSED IN WALL TUNDISH

TURE1A



SPECIFICATIONS

Stainless Steel Recessed in Wall Tundish Model TURE1A
from Stainless Metal Craft.
Phone 02 4735 5666